

Product

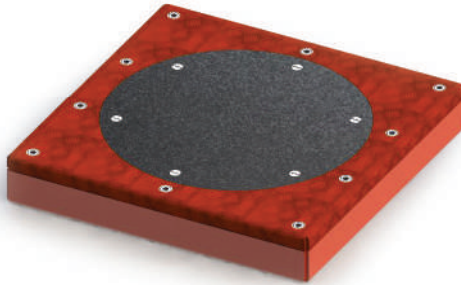


Axle Play Detector

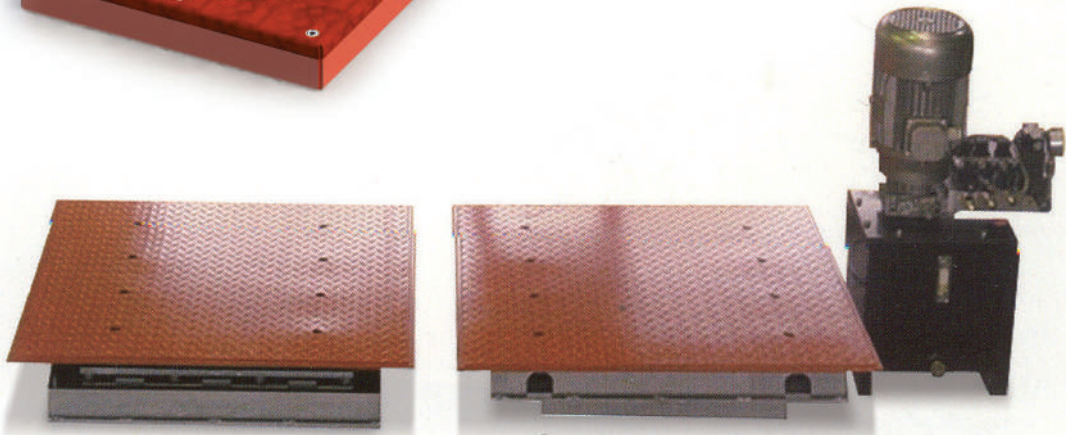
Axle Play Detector는 자동차의 차축, 현가장치, 조향장치의 볼조인트나 베어링결합부의 마모, 크랙 등의 결함을 육안이나 청음 등 감각을 이용하여 검사할 수 있도록 돕는 기기입니다.

Axle Play Detector can help inspect worn-out and cracks at the axle, suspension, and steering wheel of vehicle by naked eye or hearing.

KPT-300



KPT-1500



Specifications

Model	KPT-300	KPT-1500
Plate Dimensions	600 X 600 mm	800 X 800 mm
Maximum Axle Load	3 ton	15 ton
Control	Individually per Platform	Individually per Platform
Power Supply to Control Unit	220V/380V, 3ph 50/60Hz	220/380/440V, 3ph, 50/60Hz
Electric Motor	0.75 Kw	3.7 Kw
Plate Movements	Rotation	Plate 1: Longitudinal and Transversal Plate 2: Transversal
Working Pressure	Wired Remote Control	Wired Remote Control with Lamp
Operation with	120 bar	120 bar
Run	-10° ~ +10°	90mm (each platform)
Dimension (L X W X H)	600 x 600 x 150 mm	800 x 800 x 185.3 mm